

Lab Installing Remote Desktop Services to Control Active Directory

Learning Targets

1. Install features to control Active Directory.
2. Understand use of Active Directory tools.
3. Create users
4. Understand replication between servers

Success Criteria; Check these off and show me when you have hit them all

Tory Check	You Check	
		Install Active Directory Tools
		Create three new users
		Demonstrate replication
		Answer questions

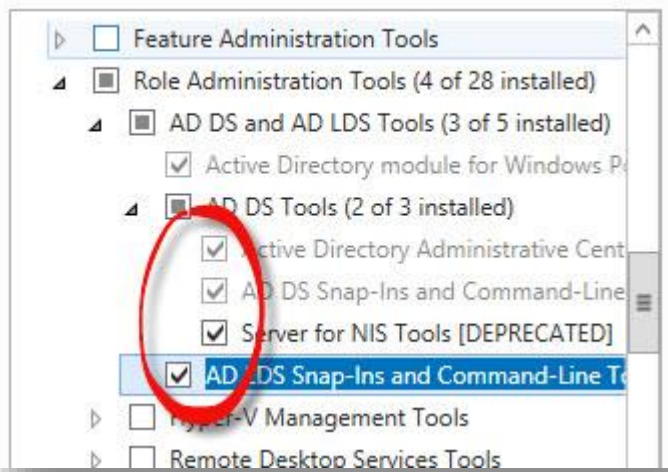
1. Select add roles and features under Server Manager.
2. You're going to select Role-based of feature-based Installations. Click next.
3. Select your own server. Next.
4. Under Select features, click Features.
5. Scroll down until you see Role Administration Tools, expand.
6. Expand AD DS Tools (2 of 3 installed)
7. Select Server for NIS Tools and AD LDS Snap-Ins... as shown below. Click next and install.

Configure a single server by adding roles, role services, and features.

Remote Desktop Services installation

Install required role services for Virtual Desktop Infrastructure (VDI) to create a virtual machine-based or session-based desktop deployment.

Features



Select features

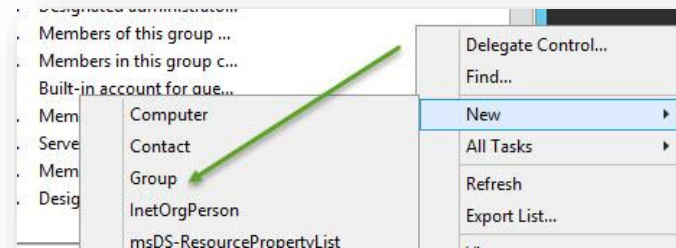
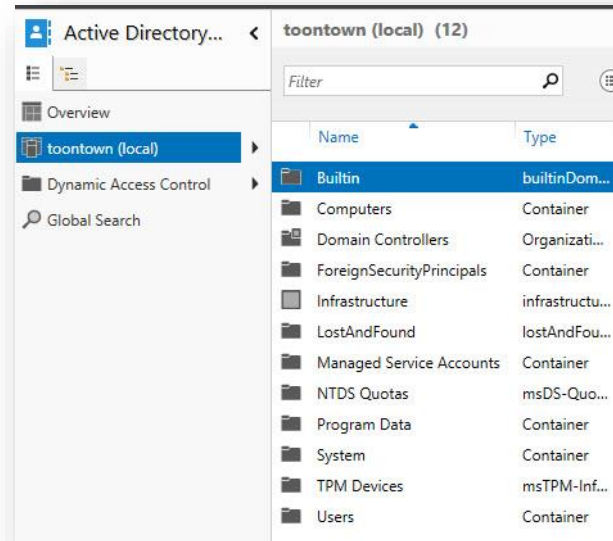
- Before You Begin
- Installation Type
- Server Selection
- Server Roles
- Features**
- Confirmation
- Results

8. Go to your other server and do the same. Make sure both servers are turned on and logged in.

9. Go to the Metro Interface and click on Administrative Tools.
10. Look for Active Directory Administrative Center and open it up.
11. Note that you see an overview and can get some information on Active Directory (AD) Administrative Center.
12. On the left, click on the name of your domain (local) and in the main window you'll see **Builtin**, Computers, Domain Controllers, etc.
13. What you see there are Organizational Units (OUs). These are the built in OUs, you can create new ones.
14. Whenever a new computer is joined to your domain it will automatically go in the Computer OU. You create users by hand in this tool, and can create them in any OU.
15. Let's create a few users.
16. Go into Users by double clicking.
17. Note that you see single head users and double head groups. The first user is Administrator. You also see what two others:

18. To the right click New under users and create a new user.

19. Create a user for me with the user name teechur. All passwords, by default, can be Sno12345. Make me a member of administrators
20. Note that you can add a LOT of additional information to your users. For now we're going to just add that information.
21. Add three other users:
 - a. Wiley Coyote
 - b. Dash McDougall
 - c. Flik Adventurer
22. Now go over to your other domain controller.
23. Go to your metro interface.
24. Type Active and open "Active Directory Users and Computers"
25. Notice it's the same as what you were just working with but it's in color and it's all alone. You can choose to work with this or the other interface. It really doesn't matter.
26. Open the Users OU. Do you see all the users you created?



27. Right click on any white area in the window on the right and select New→Group and create a group named dogs.
28. Let it be a regular old global group.
29. Double click on one of your users you created and select the "Member of" tab and click add. Type "dogs" and click return. Note that "Domain Users" is a default group that everyone already belongs to because we are all domain users!

<p>30. Double click on the group named dogs and click the Members tab. You should see the dog you already added. Now let's add the other two. I added Wiley so I will click Add and first type Dash and click "check names", then Flik and "check names. If it finds both, I'm good and will click okay.</p> <p>31. Now you should see all three in there under members.</p> <p>32. Another way to make this faster is to go back to your list in your OU. Right click on Wiley and select copy. Create Dot T. Dot.</p> <p>33. Double click on Dot and look at "Member of" and note that she is already a member of dogs. Very cool!</p> <p>34. Go back and look in your other Active Directory and check it out, everything has replicated!! How cool is that?</p> <p>35. What is replication?</p>	

Questions

<p>1. Describe how you create a new user.</p>					
<p>2. What is an organizational unit used for?</p>					
<p>3. What OU did you put Dash in?</p>					
<p>4. If you were to create another OU, what could it be and how could you organize the users you created within that OU?</p>					
<p>5. Besides users, what else can you put into OUs?</p>					
<p>6. What is a group for?</p>					
<p>7. What are the two main types of groups?</p>					
<p>8. What are the different "scopes" of groups (global, domain local, etc.). Note you can click on a group to look at the scopes, and you'll be watching a video.</p>	<table border="1"> <tr><td></td></tr> <tr><td></td></tr> <tr><td></td></tr> <tr><td></td></tr> </table>				

9. How can you create users quickly without having to add a bunch of redundant information each time?