

Lab 7-5 Power Configuration in Windows 8

Have Tory Check Off:

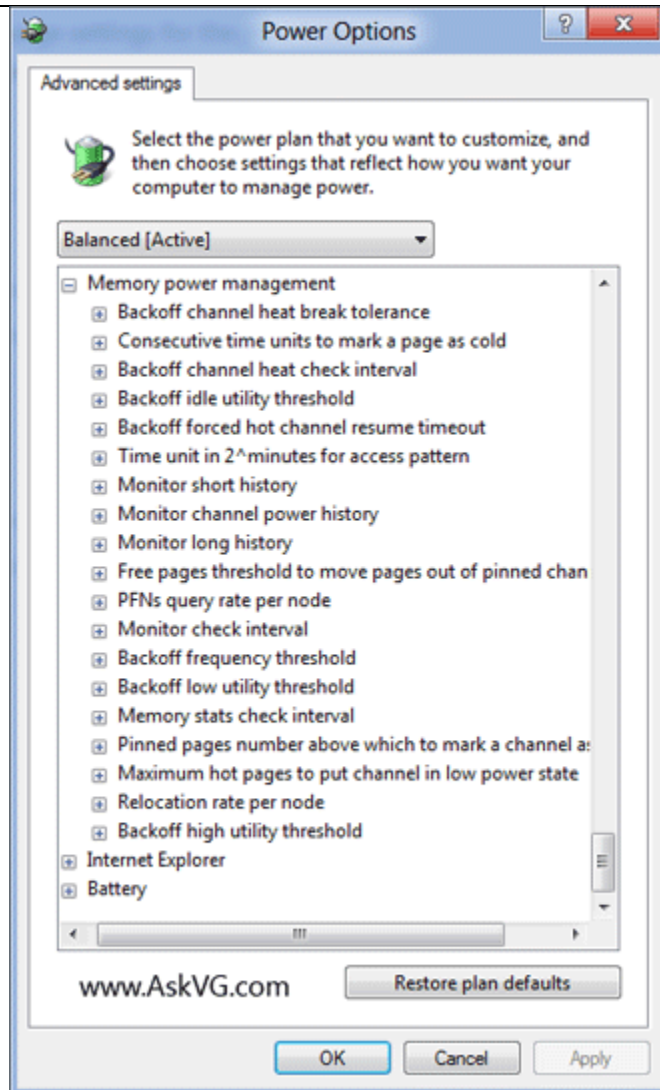
Check	Task
	Open Power Configuration from run
	Access advanced settings
	Set up your own power plan.
	Answer ALL questions

Windows 8 has the same features, plus a few more, available in Windows 7. Play with the Windows 8 features. Note that when you are on a laptop, you will have even more options because power configurations on a laptop are more important to preserve battery life.

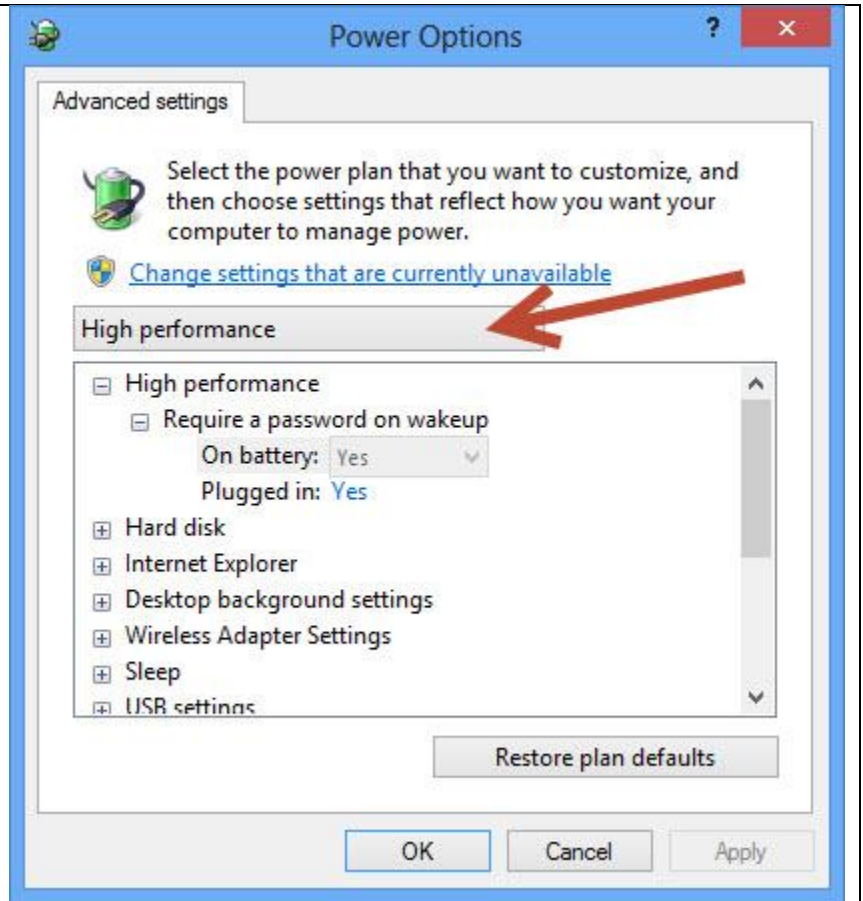
Open Windows 8 Power Configuration

1. From Metro hit Windows key-r to open RUN
2. Type powercfg.cpl
3. .cpl stands for control panel.
4. Click on "Change Plan Settings" next to your current plan.
5. Click "Change advanced power settings"
6. You will get access to all of the power configurations.
7. Some may be greyed out if you're not using a laptop.
8. As you look at the list, notice that there are things related to MEMORY in the power settings. Why do you suppose this is?

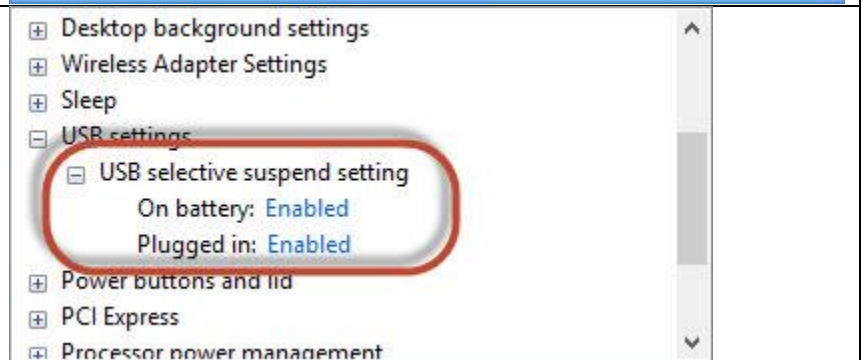
9. You will also notice hard drive settings. Again, why does this matter?



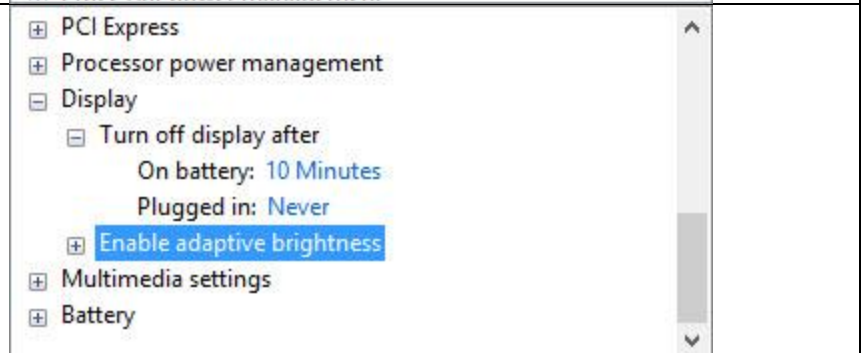
10. What are the four options for power plans on your computer?



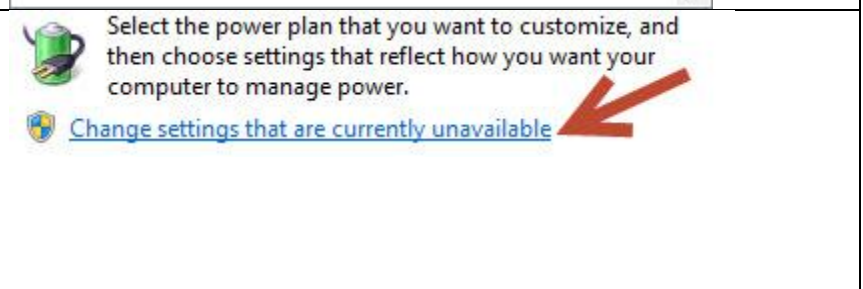
- 11. Select the high performance plan.
- 12. Scroll down and maximize USB settings.
- 13. Maximize (expand) USB selective suspend settings.
- 14. Disable it on battery, if you have that option.



- 15. Select Display and expand. Set it so that the display never turns off.
- 16. Turn off adaptive brightness.

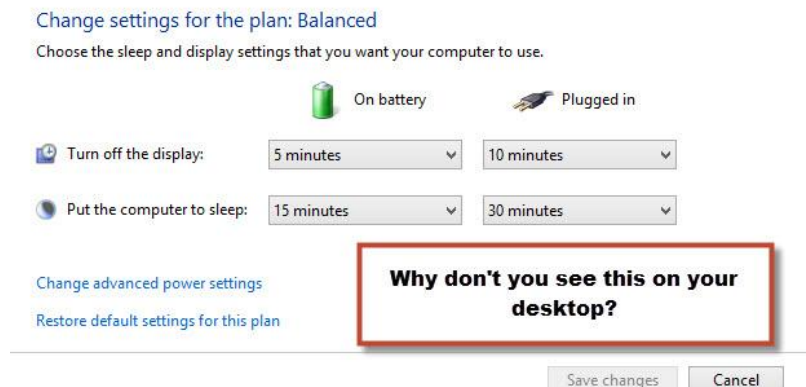


- 17. Click on "change settings that are currently unavailable".
- 18. Why are these things unavailable (do you think)?



19. Expand PCI Express and note that it has Link State Power Management. Look that up. What does that mean?	<ul style="list-style-type: none"> [-] PCI Express <ul style="list-style-type: none"> [-] Link State Power Management <ul style="list-style-type: none"> On battery: Maximum power savings Plugged in: Moderate power savings [-] Processor power management
20. Expand processor power management. What is the difference between active and passive cooling?	
21. Now go in and create your own power plan. Change at least four things and document what you changed.	
Changed	What the purpose was

1. Look at the power plan options and tell me why you don't see this on your desktop?



Answer ALL questions above. Have me check this off.