

Lab 5-9 Changing the File System Type

Objective

Sometimes you have a hard drive that is formatted FAT but you want the security of NTFS. You would think you'd have to format it all over again and lose your data, right?

Wrong! There is a little utility that will allow you to change the way the drive is formatted from FAT to NTFS.

Note: You cannot convert from NTFS to FAT because of how the vector table is stored in NTFS. Think of it the same way you can use an old device in a newer port (say you can use a SATA 1.5 drive with a SATA 2.0 port) but you can't use the new stuff in the old port.

Materials Required

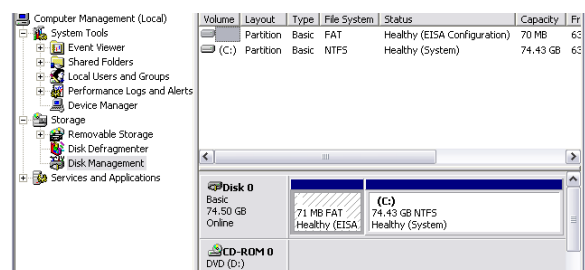
- One small partition on your drive that is formatted in FAT
- DOS boot floppy with FDISK on it

Lab Setup & Safety Tips

- Each workstation's hard drive should contain one unformatted primary partition that has been set as active during lab 6-1.
- You should have completed lab 6-2 to ensure your hard drive is defragmented and has been checked for errors.

Here we go

1. Boot into Windows XP.
2. Ensure that you have one small formatted partition on your drive and that it is formatted FAT.
3. What drive letter is assigned to your small partition? (It should be probably E or F.)
4. At the command prompt type **convert *driveletter*: /FS:NTFS**
 - a. What you're saying is:
 - b. **Convert** the drive at this letter
 - c. From **FS** FAT to
 - d. **NTFS**
5. Give the drive a volume label of **mydrive**.
6. Press enter and it will tell you if you can do not.
7. If you were to install XP on a FAT32 on a hard drive and you converted, the conversion would take place next time you your computer. If you looked in computer management, it would still say it was FAT.



this or
single
rebooted

8. If you convert a partition on a drive that contains multiple partitions, the conversion takes place right away. Check it out.
 - a. Open computer management
 - b. Look in Disk management
 - c. Take a screen shot and print it. Attach it to your *lab report*.

Review Questions

Circle True or False.

1. You can convert an NTFS partition to FAT without losing data? *True or false*
2. You can convert a FAT32 partition to FAT16 without losing data? *True or false*
3. What is the benefit of FAT16 over FAT32?

4. What is the benefit of FAT32 over NTFS?

5. What is the benefit of NTFS over FAT?